

**VEHICLE TYPE**

NLR85L (ED6AYG-HD6AYG) / NNR85L (FD5AYG-HD5AYG)  
/ NPR75L (HL5VAYGN-KL5VAYGN-KL5VAYG) / NPR 66-71-75-77  
ISUZU / NKR 250 / NPR 250 / NKR 66 E2L / HINO 300 SERI 4X2  
/ NQR 70 P / ELF NKR71 / ELF 130 / NPR 66L / NQR71PL / NPR85L /  
4.3 NPR 70 / NKR66E / NPR66P / NQR71R / NPR 66 LL / HINO DUTRO /  
NQR71PL / NPR 75 LONG / NLR / NLR LONG / NNR / NNR LONG / NPR 75  
/ N 10 / NPR 8 / NPR 8 LONG

**TRANSMISSION TYPE**

MYY5T / MOY-9F / MOY-9H / MOYCR / MYY-6S  
/ MOYMB / MOYNA/ MYY-5S / MYY-6P / MYY-5A  
/ MOYGX / MOY4N / MOYNB / MOYNC  
/ MYY5R / MYY5D / MOYPN / MOYUK /  
MOYMC / MOYMR / MOYPZ ( 5,315-5,979 )

Kozmaksan Isuzu Power Take OFFs designed for Isuzu trucks. Kozmaksan Isuzu PTOs has Single output model, Side Mounting type option and available for UNI&ISO mounting housing or suitable for flange connections.

Applications;

- Garbage Truck
- Crane Truck
- Dump Truck

Vehicle Type

**ISUZU**

MECHANIC

SIDE MOUNTING

Transmission Type

MY5T / MOY-9F / MOY-9H / MOYCR / MYY-6S / MOYMB /  
 MOYNA / MYY-5S / MYY-6P / MYY-5A / MOYGX /  
 MOY4N / MOYNB / MOYNC / MYY5R / MYY5D /  
 MOYPN / MOYUK / MOYMC / MOYMR / MOYPZ ( 5,315-5,979 )

**ISZ.13.MOY9F**

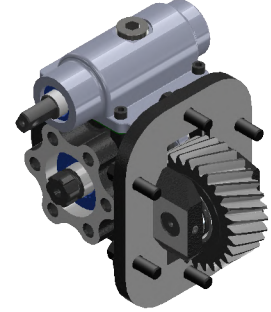
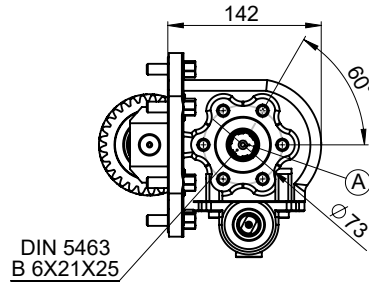
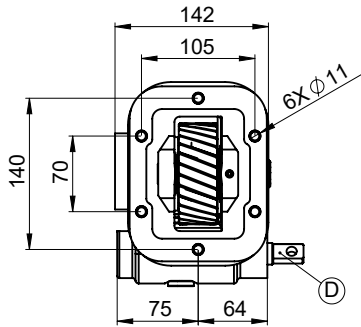
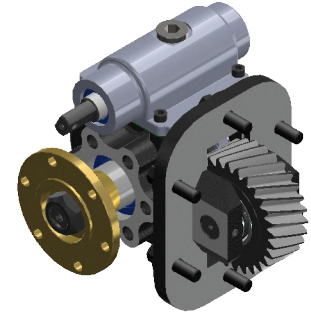
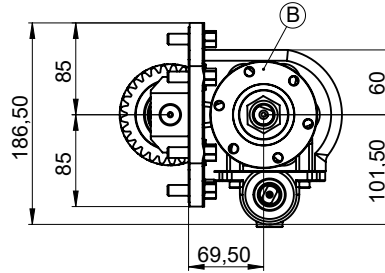
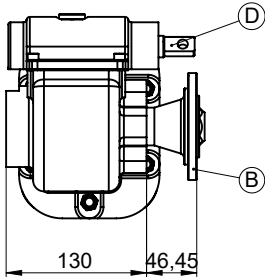
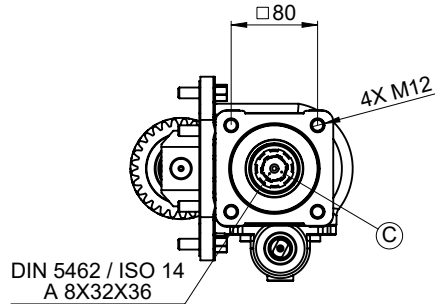
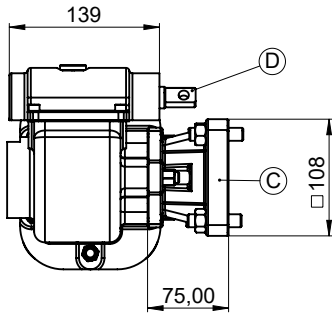
Product Code

01

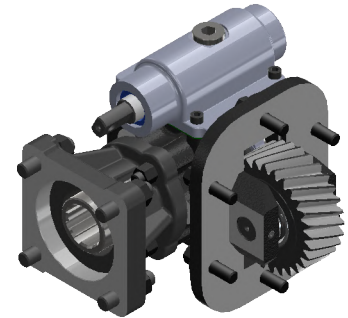
01.02.2019

2/6

Rev. Date

**UNI OUTPUT****FLANGE OUTPUT****ISO OUTPUT**

DIN 5462 / ISO 14  
 A 8X32X36



A	DIN 5463 6X21X25 UNI 3 Bolts Output
B	ISO 7647-7646 Standard Flange Output
C	ISO 14 - DIN 5462 8X32X36 Output
D	Mechanic System

	UNI Output	FLANGE Output	ISO Output
Power(kW)@1000 RPM	23	36,7	23
Max. Torque (Nm)	220	350	220
Weight (Kg)	9,75	10	11
Ratio	1/1,03		
Mounting Type	Left Side Mounting		
Sense of Rotation	CW		

- Kozmaksan has all rights to change information in this catalogue without announcing it. This document is representing general information. It is not a contract.  
 - All information belongs to only PTO/Split Shaft. Do not use PTO/Split Shaft, if it is not suitable for your engine and main transmission.  
 - Pumps, shafts and other parts should not be longer or heavier than approved distance and weight by the manufacturer of main transmission and engine.

KozmaksanPTO



kozmaksanpto



kozmaksan-hydraulics-pto



Vehicle Type

**ISUZU**

VACUUM CONTROL

SIDE MOUNTING

Transmission Type

MYY5T / MOY-9F / MOY-9H / MOYCR / MYY-6S / MOYMB /  
 MOYNA / MYY-5S / MYY-6P / MYY-5A / MOYGX /  
 MOY4N / MOYNB / MOYNC / MYY5R / MYY5D /  
 MOYPN / MOYUK / MOYMC / MOYMR / MOYPZ ( 5,315-5,979 )

**ISZ.13.MOY9F.V**

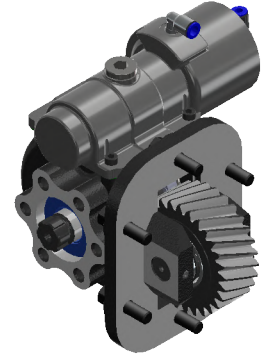
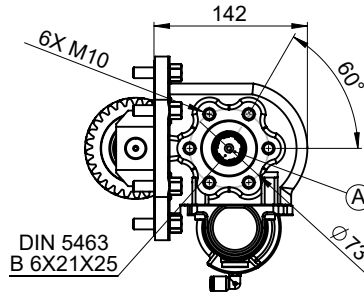
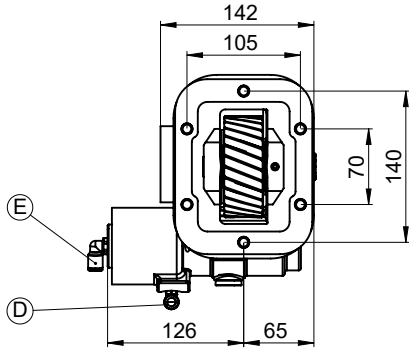
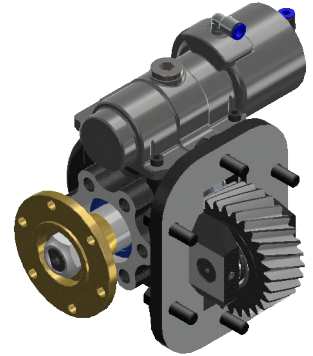
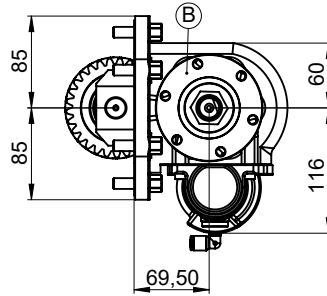
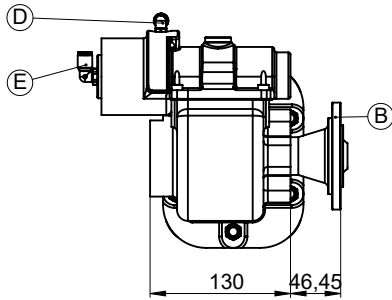
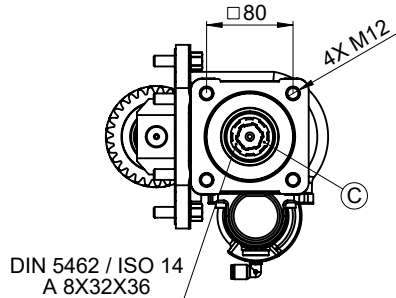
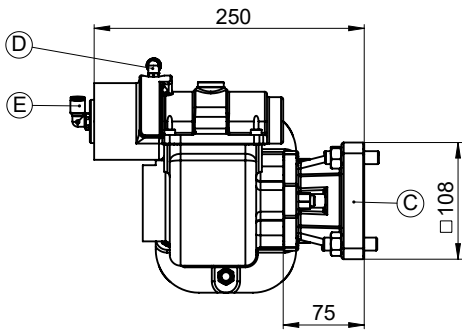
Product Code

01

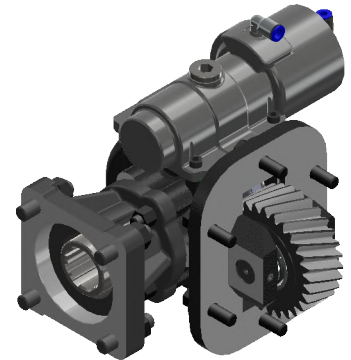
01.02.2019

3/6

Rev. Date

**UNI OUTPUT****FLANGE OUTPUT****ISO OUTPUT**

DIN 5462 / ISO 14  
 A 8X32X36



A DIN 5463 6X21X25 UNI 3 Bolts Output

B ISO 7647-7646 Standard ISO Output

C ISO 14 - DIN 5462 8X32X36 Output

D Air Inlet 1/8"

E Air Inlet R 1/8" (Opt.)

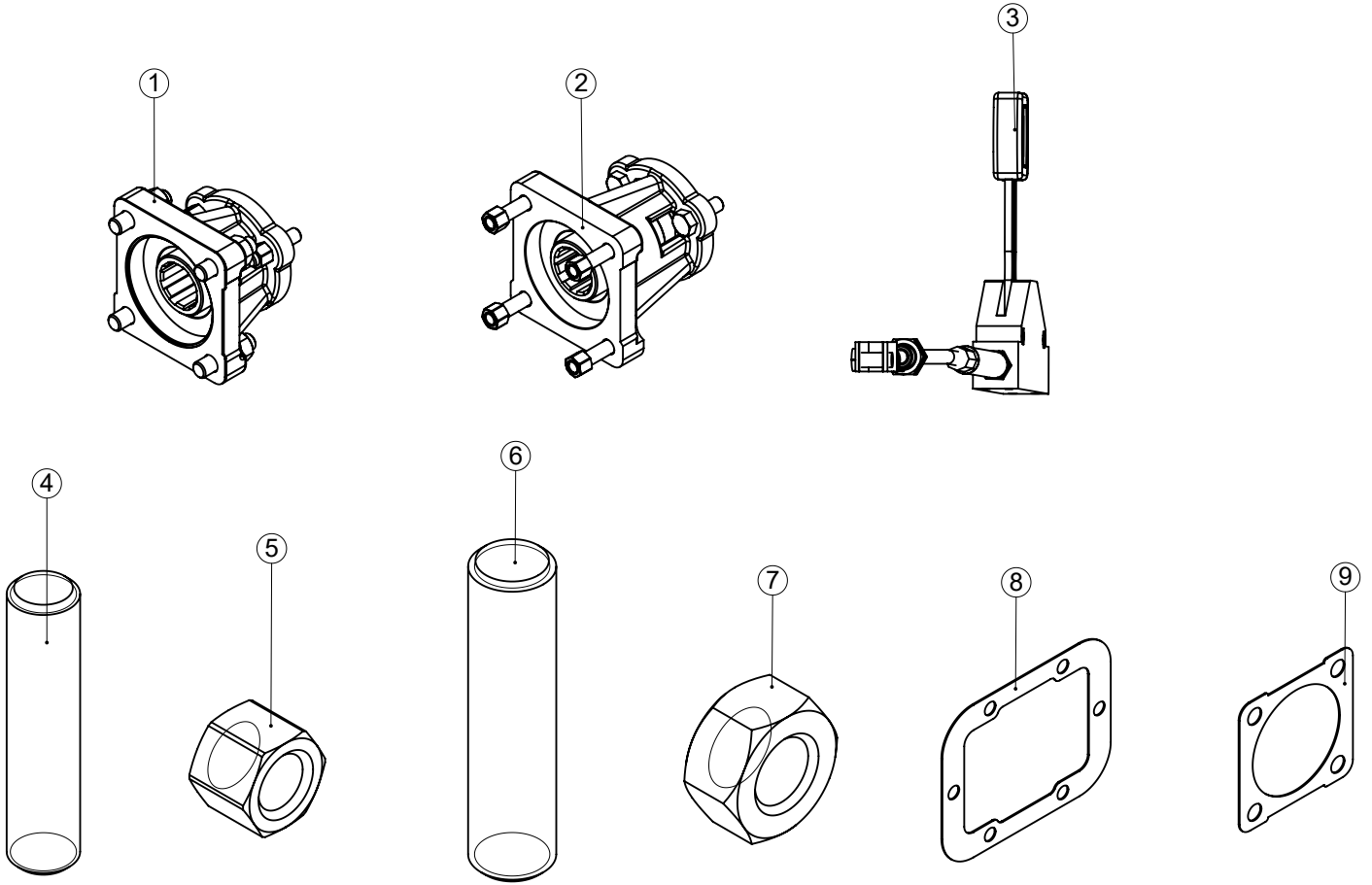
	UNI Output	FLANGE Output	ISO Output
Power(kW)@1000 RPM	23	36,7	23
Max. Torque (Nm)	220	350	220
Weight (Kg)	10	10,5	11,5
Ratio	1/1,03		
Mounting Type	Left Side Mounting		
Sense of Rotation	CW		

- Kozmaksan has all rights to change information in this catalogue without announcing it. This document is representing general information. It is not a contract.  
 - All information belongs to only PTO/Split Shaft. Do not use PTO/Split Shaft, if it is not suitable for your engine and main transmission.  
 - Pumps, shafts and other parts should not be longer or heavier than approved distance and weight by the manufacturer of main transmission and engine.

KozmaksanPTO

kozmaksanpto

kozmaksan-hydraulics-pto



No	Code	Description	No	Code	Description
1	AKP.PP.2.52	ISO Adapter	9	T04-002	Gasket 1mm
2	AKP.PP.1	ISO Adapter (HINO, ISUZU)	10		
3	KTP50-55.3500	3.5 MT Control Cable and Lever	11		
4	T07-004	M10X1,5X45 Stud 9 pcs	12		
5	T08-001	M10X1,5 Nut 9 pcs	13		
6	T07-003	M12X50 Stud 4 pcs	14		
7	T08-006	M12 Nut 4 pcs	15		
8	T04-019	Gasket 1MM	16		

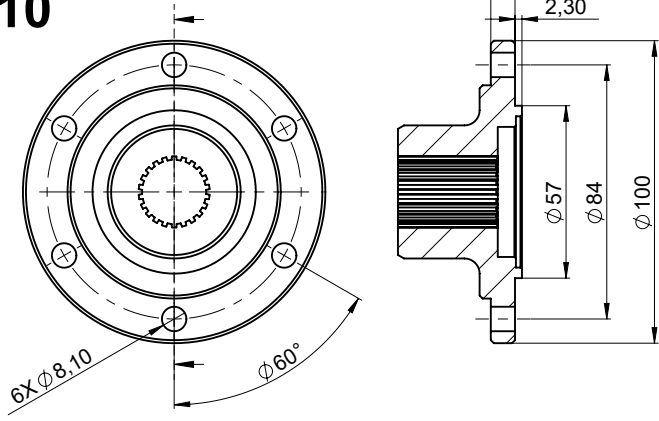
- Kozmaksan has all rights to change information in this catalogue without announcing it. This document is representing general information. It is not a contract.  
 - All information belongs to only PTO/Split Shaft. Do not use PTO/Split Shaft, if it is not suitable for your engine and main transmission.  
 - Pumps, shafts and other parts should not be longer or heavier than approved distance and weight by the manufacturer of main transmission and engine.

KozmaksanPTO

kozmaksanpto

kozmaksan-hydraulics-pto

10



ISZ.13.MOY9F

Product Code

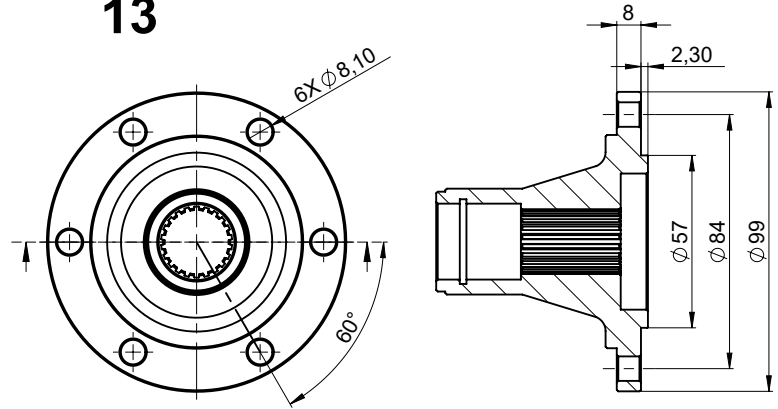
01

01.02.2019

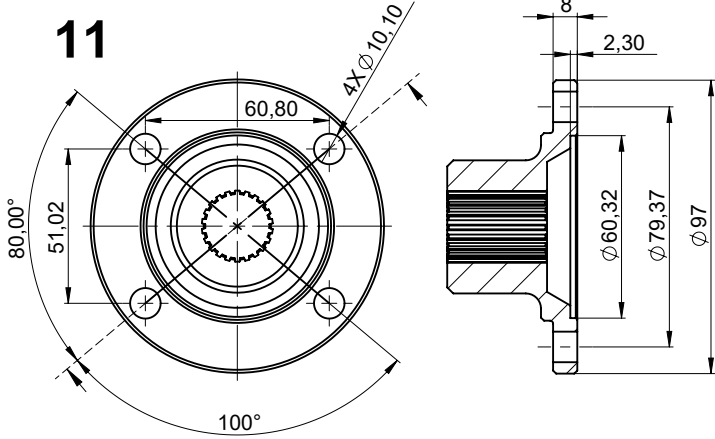
5/6

Rev. Date

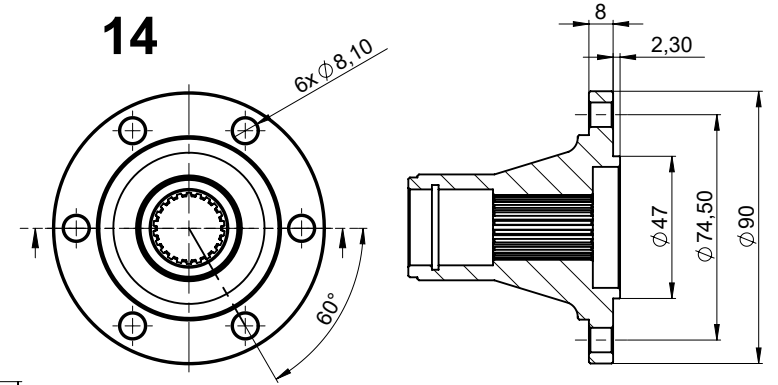
13



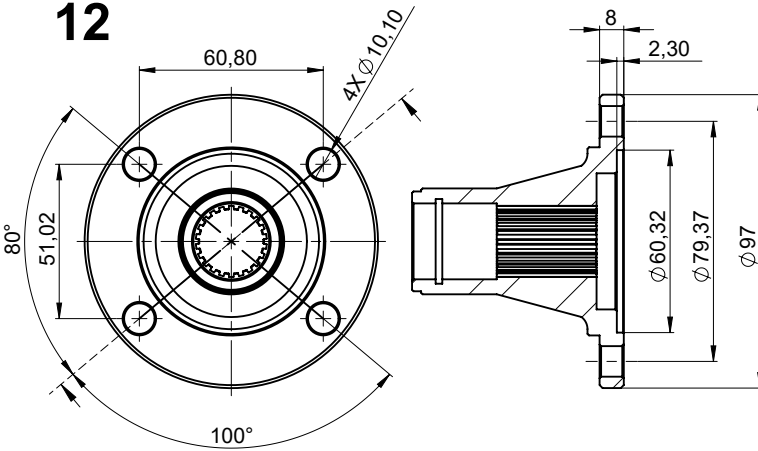
11



14



12



No	Code	Description			
10	C06-079	ISO 7646 - 100x6x8			
11	C06-083	ISO 7647 - SAE 1300x4x10			
12	C06-083-1	ISO 7647 - SAE 1300x4x10			
13	C06-083-2	ISO 7646 - 100x6x8			
14	C06-083-3	ISO 7646 - 90x6x8			

- Kozmaksan has all rights to change information in this catalogue without announcing it. This document is representing general information. It is not a contract.  
 - All information belongs to only PTO/Split Shaft. Do not use PTO/Split Shaft, if it is not suitable for your engine and main transmission.  
 - Pumps, shafts and other parts should not be longer or heavier than approved distance and weight by the manufacturer of main transmission and engine.

KozmaksanPTO



kozmaksanpto

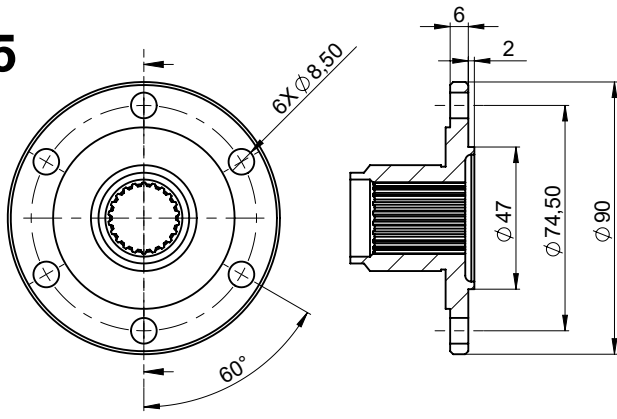


kozmaksan-hydraulics-pt





15



ISZ.13.MOY9F

Product Code

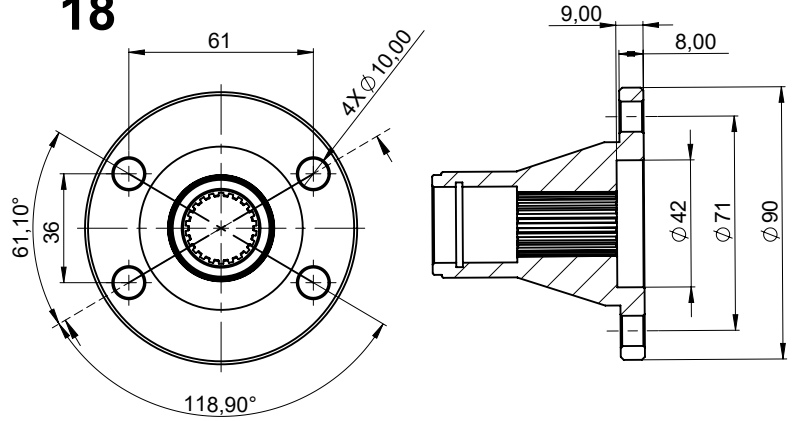
01

01.02.2019

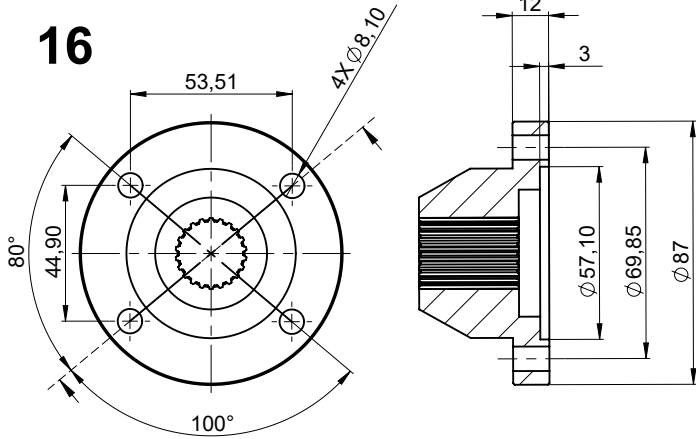
6/6

Rev. Date

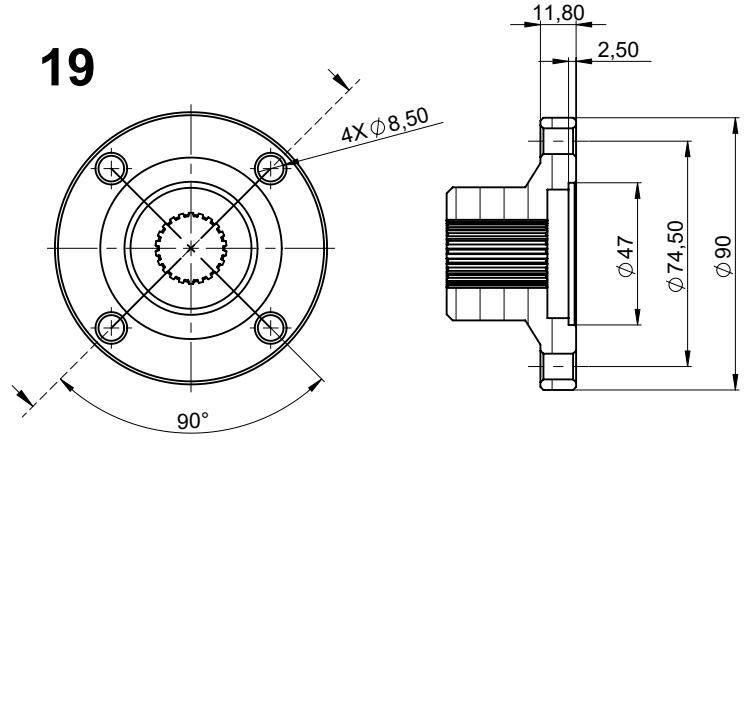
18



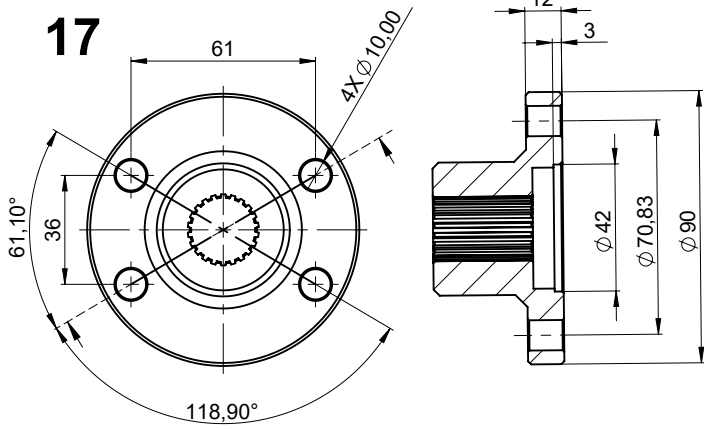
16



19



17



	Code	Description			
15	C06-107	ISO 7646 - 90x6x8			
16	C06-110	ISO 7647 - SAE 1100x4x8			
17	C06-184	Ø 90 Flange			
18	C06-185	Ø 90 Flange			
19	C06-187	Ø 90 Flange			

- Kozmaksan has all rights to change information in this catalogue without announcing it. This document is representing general information. It is not a contract.  
 - All information belongs to only PTO/Split Shaft. Do not use PTO/Split Shaft, if it is not suitable for your engine and main transmission.  
 - Pumps, shafts and other parts should not be longer or heavier than approved distance and weight by the manufacturer of main transmission and engine.

KozmaksanPTO



kozmaksanpto



kozmaksan-hydraulics-pt

